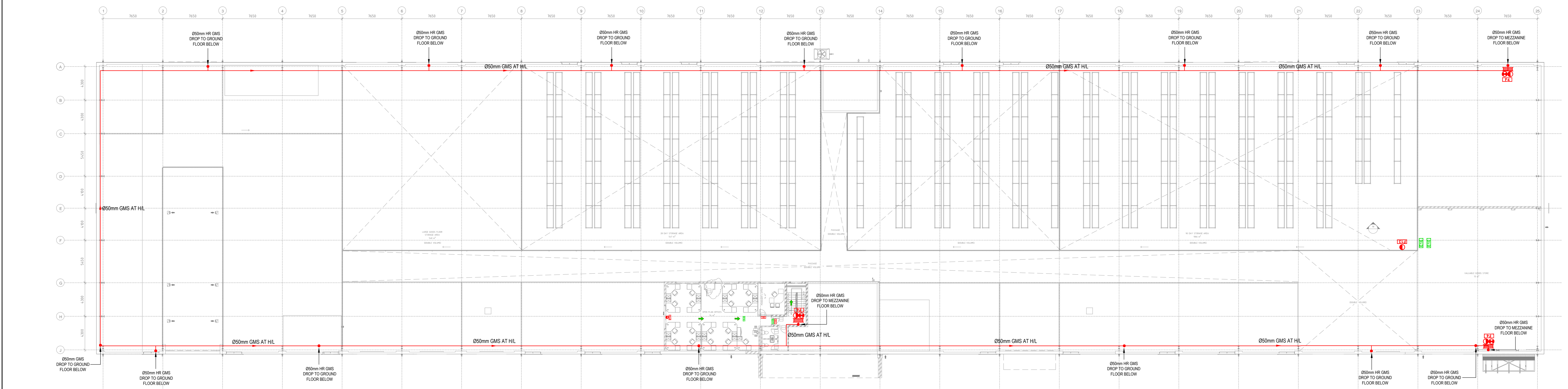
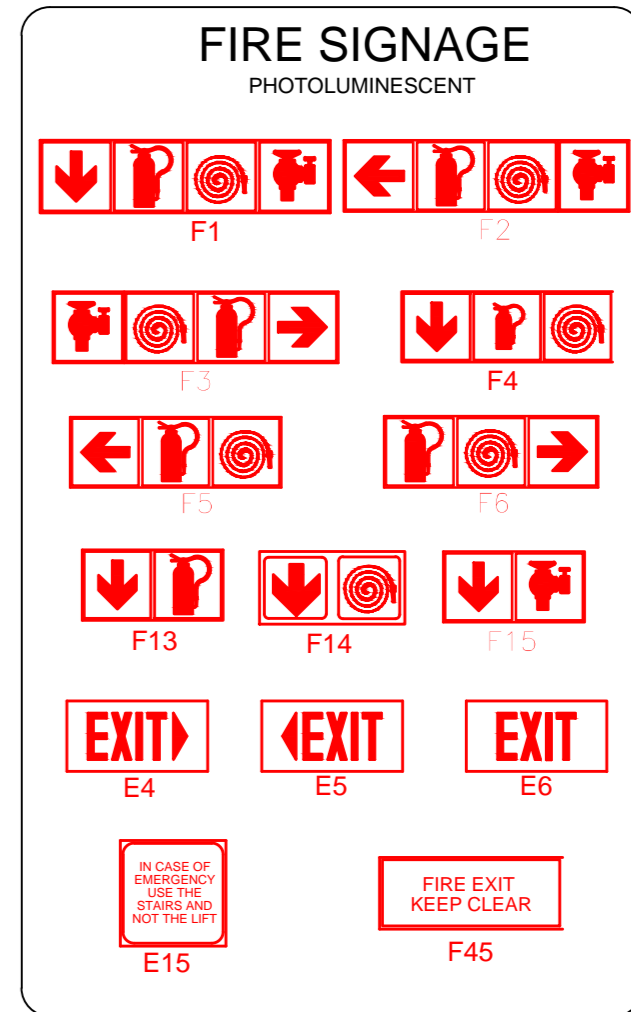
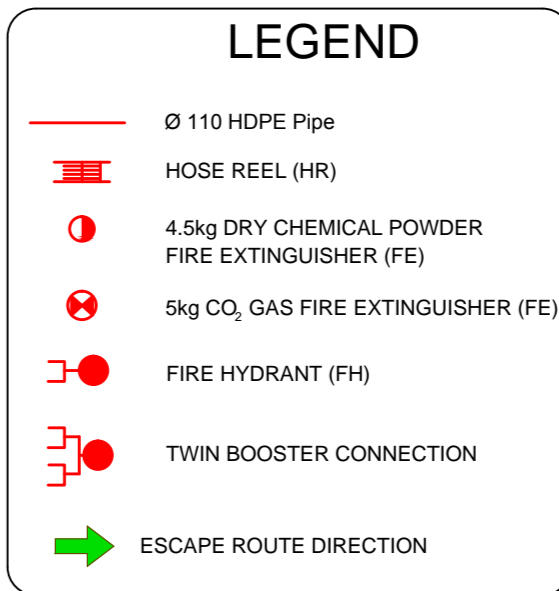
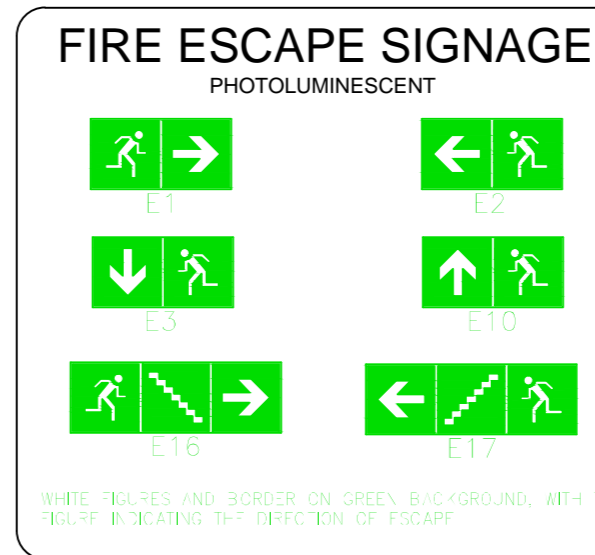


GROUND FLOOR PLAN  
1:200



MEZZANINE FLOOR PLAN  
1:200



**NOTES:**

- General**  
The Contractor is responsible for correct field dimensions, clearances, heights, quantities, fabrication processes, techniques of construction and co-ordination of his work with that of all other trades and is to provide all devices necessary for safe and satisfactory operation.  
The Contractor must adhere to the co-ordination principal shown on the drawing and must respect all the architectural and plumbing drawings and other services drawings and ensure that in fixing his work it will not obstruct the fixing or future maintenance of other services.
- Occupancy Classification:** J2
- Fire Wards:** Fire walls between residential units will extend to the underside of roof covering.
- Structural elements and components** shall have a minimum stability rating of 60 minutes.
- Suspended ceilings and its supporting members** to be of non-combustible material.
- Water Supply**  
Water supply to the fire fighting equipment to comply with SANS 10400 Part IV (2002) fire water storage tanks.
- Fire Equipment**  
All fire hydrants shall comply to SANS 1128 and bear the SABS mark of approval.
- Fire Hydrant valves shall be of the Ø 65mm female coupling type, complete with handwheel and instantaneous coupling outlet.
- 1 x Fire Hose Reel per 500m<sup>2</sup> or part thereof, to be installed in accordance with SANS 543.
- All fire hose reels shall be 30 metres length, complete with Ø7mm aluminium discharge nozzle, handwheel isolating supply valve, rail guide to assist hose reel deployment from reel and union coupling in the Ø25mm see pipe.
- 1 x 4.5kg Fire Extinguisher per 400m<sup>2</sup> or part thereof, to be installed in accordance with SANS 10105.
- All portable fire extinguishers and installation to be in accordance with SANS 10105-1:2005, SANS 10105:2006 and SANS 1022:2004, and bear the SABS mark of approval.
- Portable fire extinguishers to be hung on purpose-made 25 x 100 x 600mm polished hard wood backboard with chamfered edges plugged to brick or concrete wall.
- Piping**  
All cold water pipes and fittings to fire hose reel, to be galvanneal mild steel (GMS) to SANS 62 as amended.
- All GMS water pipes and fittings to fire hose reels are to be surface-mounted and not chased in walls.
- All GMS water pipes and fittings to fire hose reels and fire hydrant are to be painted 2 coats of high quality signal red in accordance with SANS 10400-3:2003, and the supplier's recommendation.
- Signage**  
Photoluminescent fire escape pictorial signs to be provided in accordance with SANS 1185-1:2008, size: 150 x 150mm, or as shown on drawing.
- Photoluminescent fire equipment pictorial signs to be provided in accordance with SANS 1185-1:2008, size: 150 x 150mm, or as shown on drawing.
- Doors**  
Escape doors to be fitted with approved self-closing devices and locking devices.
- Class 'A' fire door to comply with SANS 1253 and to be fitted with approved locking devices.
- Emergency Lighting**  
Emergency lighting to be a minimum of 50 lux for a period of at least 60 minutes.
- Lifts**  
In a fire condition, lift control to be designed to bring all lifts to Ground Floor without stopping, and to remain with doors open.

**DRAWING ON THE BACKGROUND**

DRAWING TITLE	DRAWING NO.	DATE	REV.
GROUND STOREY FLOOR PLAN, PART A	K018-200-1-04	17-10-2016	D
GROUND STOREY FLOOR PLAN, PART B	K018-200-2-04	17-10-2016	C
FIRST STOREY FLOOR PLAN (MEZZANINE), PART A	K018-201-1-04	17-10-2016	B
FIRST STOREY FLOOR PLAN (MEZZANINE), PART B	K018-201-2-04	17-10-2016	C

**ARCHITECT:**

A	ISSUED FOR APPROVAL	02-08-2017	M.N.	J.O.
REV	DESCRIPTION	DATE	DRAWN	CHECKED

**CLIENT:**  
SOUTH AFRICAN REVENUE SERVICE  
Quinton Dytson SABS  
Logistics Management Tel: 012 453 3147 Fax: 012 344 4009 079 372 7043  
QDytson@vsn.gov.za

**ARCHITECTS:**

**THE CREATIVE AXS ARCHITECTS**  
Unit 1, 1st Floor, 101, 102, 103, 104, 105, 106, 107, 108, 109, 110, 111, 112, 113, 114, 115, 116, 117, 118, 119, 120, 121, 122, 123, 124, 125, 126, 127, 128, 129, 130, 131, 132, 133, 134, 135, 136, 137, 138, 139, 140, 141, 142, 143, 144, 145, 146, 147, 148, 149, 150, 151, 152, 153, 154, 155, 156, 157, 158, 159, 160, 161, 162, 163, 164, 165, 166, 167, 168, 169, 170, 171, 172, 173, 174, 175, 176, 177, 178, 179, 180, 181, 182, 183, 184, 185, 186, 187, 188, 189, 190, 191, 192, 193, 194, 195, 196, 197, 198, 199, 200, 201, 202, 203, 204, 205, 206, 207, 208, 209, 210, 211, 212, 213, 214, 215, 216, 217, 218, 219, 220, 221, 222, 223, 224, 225, 226, 227, 228, 229, 230, 231, 232, 233, 234, 235, 236, 237, 238, 239, 240, 241, 242, 243, 244, 245, 246, 247, 248, 249, 250, 251, 252, 253, 254, 255, 256, 257, 258, 259, 260, 261, 262, 263, 264, 265, 266, 267, 268, 269, 270, 271, 272, 273, 274, 275, 276, 277, 278, 279, 280, 281, 282, 283, 284, 285, 286, 287, 288, 289, 290, 291, 292, 293, 294, 295, 296, 297, 298, 299, 300, 301, 302, 303, 304, 305, 306, 307, 308, 309, 310, 311, 312, 313, 314, 315, 316, 317, 318, 319, 320, 321, 322, 323, 324, 325, 326, 327, 328, 329, 330, 331, 332, 333, 334, 335, 336, 337, 338, 339, 340, 341, 342, 343, 344, 345, 346, 347, 348, 349, 350, 351, 352, 353, 354, 355, 356, 357, 358, 359, 360, 361, 362, 363, 364, 365, 366, 367, 368, 369, 370, 371, 372, 373, 374, 375, 376, 377, 378, 379, 380, 381, 382, 383, 384, 385, 386, 387, 388, 389, 390, 391, 392, 393, 394, 395, 396, 397, 398, 399, 400, 401, 402, 403, 404, 405, 406, 407, 408, 409, 410, 411, 412, 413, 414, 415, 416, 417, 418, 419, 420, 421, 422, 423, 424, 425, 426, 427, 428, 429, 430, 431, 432, 433, 434, 435, 436, 437, 438, 439, 440, 441, 442, 443, 444, 445, 446, 447, 448, 449, 450, 451, 452, 453, 454, 455, 456, 457, 458, 459, 460, 461, 462, 463, 464, 465, 466, 467, 468, 469, 470, 471, 472, 473, 474, 475, 476, 477, 478, 479, 480, 481, 482, 483, 484, 485, 486, 487, 488, 489, 490, 491, 492, 493, 494, 495, 496, 497, 498, 499, 500, 501, 502, 503, 504, 505, 506, 507, 508, 509, 510, 511, 512, 513, 514, 515, 516, 517, 518, 519, 520, 521, 522, 523, 524, 525, 526, 527, 528, 529, 530, 531, 532, 533, 534, 535, 536, 537, 538, 539, 540, 541, 542, 543, 544, 545, 546, 547, 548, 549, 550, 551, 552, 553, 554, 555, 556, 557, 558, 559, 560, 561, 562, 563, 564, 565, 566, 567, 568, 569, 570, 571, 572, 573, 574, 575, 576, 577, 578, 579, 580, 581, 582, 583, 584, 585, 586, 587, 588, 589, 590, 591, 592, 593, 594, 595, 596, 597, 598, 599, 600, 601, 602, 603, 604, 605, 606, 607, 608, 609, 610, 611, 612, 613, 614, 615, 616, 617, 618, 619, 620, 621, 622, 623, 624, 625, 626, 627, 628, 629, 630, 631, 632, 633, 634, 635, 636, 637, 638, 639, 640, 641, 642, 643, 644, 645, 646, 647, 648, 649, 650, 651, 652, 653, 654, 655, 656, 657, 658, 659, 660, 661, 662, 663, 664, 665, 666, 667, 668, 669, 670, 671, 672, 673, 674, 675, 676, 677, 678, 679, 680, 681, 682, 683, 684, 685, 686, 687, 688, 689, 690, 691, 692, 693, 694, 695, 696, 697, 698, 699, 700, 701, 702, 703, 704, 705, 706, 707, 708, 709, 710, 711, 712, 713, 714, 715, 716, 717, 718, 719, 720, 721, 722, 723, 724, 725, 726, 727, 728, 729, 730, 731, 732, 733, 734, 735, 736, 737, 738, 739, 740, 741, 742, 743, 744, 745, 746, 747, 748, 749, 750, 751, 752, 753, 754, 755, 756, 757, 758, 759, 760, 761, 762, 763, 764, 765, 766, 767, 768, 769, 770, 771, 772, 773, 774, 775, 776, 777, 778, 779, 780, 781, 782, 783, 784, 785, 786, 787, 788, 789, 790, 791, 792, 793, 794, 795, 796, 797, 798, 799, 800, 801, 802, 803, 804, 805, 806, 807, 808, 809, 810, 811, 812, 813, 814, 815, 816, 817, 818, 819, 820, 821, 822, 823, 824, 825, 826, 827, 828, 829, 830, 831, 832, 833, 834, 835, 836, 837, 838, 839, 840, 841, 842, 843, 844, 845, 846, 847, 848, 849, 850, 851, 852, 853, 854, 855, 856, 857, 858, 859, 860, 861, 862, 863, 864, 865, 866, 867, 868, 869, 870, 871, 872, 873, 874, 875, 876, 877, 878, 879, 880, 881, 882, 883, 884, 885, 886, 887, 888, 889, 890, 891, 892, 893, 894, 895, 896, 897, 898, 899, 900, 901, 902, 903, 904, 905, 906, 907, 908, 909, 910, 911, 912, 913, 914, 915, 916, 917, 918, 919, 920, 921, 922, 923, 924, 925, 926, 927, 928, 929, 930, 931, 932, 933, 934, 935, 936, 937, 938, 939, 940, 941, 942, 943, 944, 945, 946, 947, 948, 949, 950, 951, 952, 953, 954, 955, 956, 957, 958, 959, 960, 961, 962, 963, 964, 965, 966, 967, 968, 969, 970, 971, 972, 973, 974, 975, 976, 977, 978, 979, 980, 981, 982, 983, 984, 985, 986, 987, 988, 989, 990, 991, 992, 993, 994, 995, 996, 997, 998, 999, 1000

**ELECTRICAL ENGINEERS:**

**SELANYA CONSULTING ENGINEERS**  
SOLUTIONS IN ELECTRICAL ENGINEERING

**PROFESSIONAL ELECTRICAL & MECHANICAL ENGINEERS**  
Tel: +27 11 455 0883 • Fax: +27 11 455 1328 • info@selanya.co.za  
P.O. Box 561, Bedfordview 2008, RSA • www.selanya.co.za

**PROJECT:**

**UPGRADES AND ALTERATIONS TO NEW PIER STATE WAREHOUSE**

**DRAWING TITLE:**

**GROUND FLOOR AND MEZZANINE PLAN  
FIRE PROTECTION LAYOUT**

**DRAWING STATUS:**

**APPROVAL**

DESIGNED:	DRAWN:	CHECKED:	APPROVED:
J.O.	M.N.	J.O.	J.O.

DATE:	DISCIPLINE:	SHEET SIZE:
17-03-2015	MECHANICAL	A0

DRAWING NO:	SCALE:	REVISION:
J0150-M-002	1:200	A

COPYRIGHT RESERVED